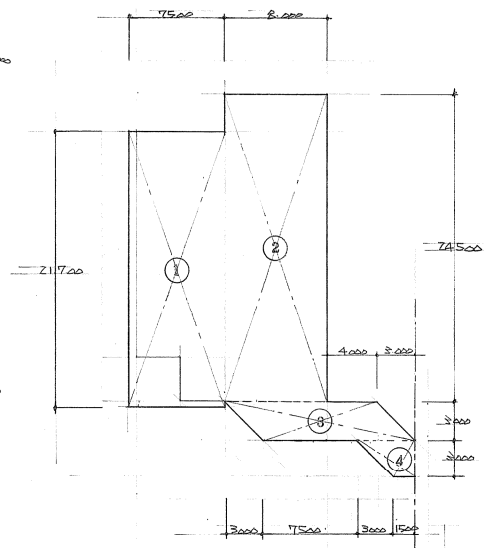


寸量図 1/600

敷地面積			
①	$(12.000 + 11.800) \times 35.600$	=	847.280
②	$(13.800 + 24.600) \times 41.600$	=	1597.440
③	$27.600 \times 13.200$	=	364.320
④	$(14.000 + 6.000) \times 47.000$	=	940.000
⑤	$(18.000 + 3.600) \times 48.400$	=	1045.440
⑥	$59.000 \times 21.000$	=	1239.000
⑦	$(22.400 + 11.000) \times 37.000$	=	2738.200
⑧	$81.000 \times 20.000$	=	1620.000
⑨	$(5.200 + 11.400) \times 39.600$	=	1437.360
⑩	$30.400 \times 3.000$	=	643.200
⑪	$19.000 \times 13.000$	=	247.000
⑫	$62.600 \times 5.600$	=	350.160
⑬	$60.000 \times 31.200$	=	1872.000
⑭	$41.000 \times 3.800$	=	155.800
⑮	$47.600 \times 4.000$	=	190.400
計			15344.200
1/2			7672.100 <sup>m2</sup>

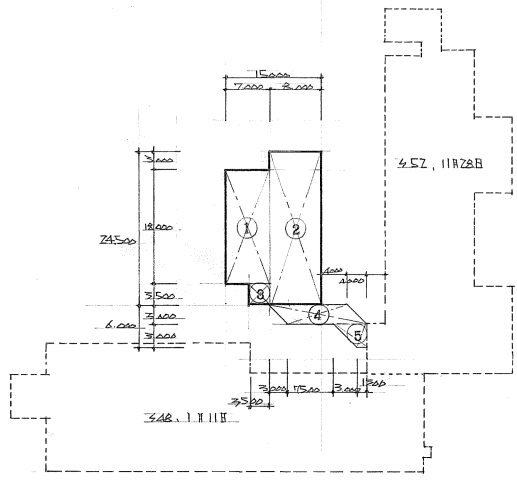


建築面積 1/300

建築面積	
①	$7500 \times 21700 = 162.750$
②	$8000 \times 24500 = 196.000$
③	$1/2 (12000 + 12000) \times 3000 = 36.000$
④	$1/2 (1500 + 4500) \times 3000 = 9.000$
計	403.750 <sup>m2</sup>

	確認番号	建築面積	1F床面積	2F床面積	PH	延べ面積
既存	48.11.17号	1683.36	1642.55	726.45	58.80	1827.80
計	42.11.28.米585号	912.96	887.76	859.75	48.00	1795.71
増築		1996.32	1930.31	1646.40	106.80	3683.51
合計		403.75	379.25			379.25
合計		2400.07	2309.56	1646.40	106.80	4062.76

敷地面積	7672.10 <sup>m2</sup>
------	-----------------------



求積図 1/600

床面積	
①	$7000 \times 18000 = 126.000$
②	$8000 \times 24500 = 196.000$
③	$3500 \times 3500 = 12.250$
④	$1/2 (12000 + 12000) \times 3000 = 36.000$
⑤	$1/2 (1500 + 4500) \times 3000 = 9.000$
計	379.250 <sup>m2</sup>